

FEDERAL LANDS ACCESS PROGRAM

Program Overview

2022 Call for Projects



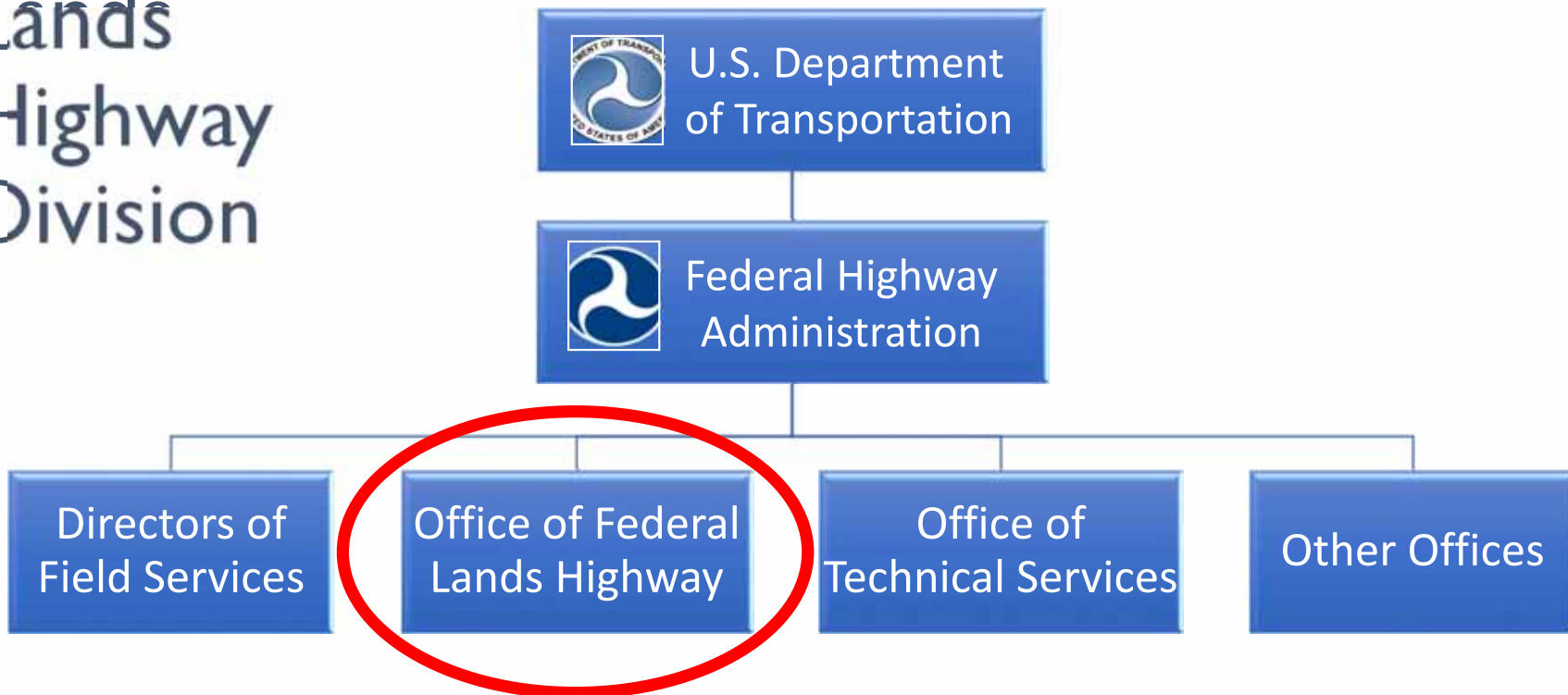
U.S. Department
of Transportation
**Federal Highway
Administration**



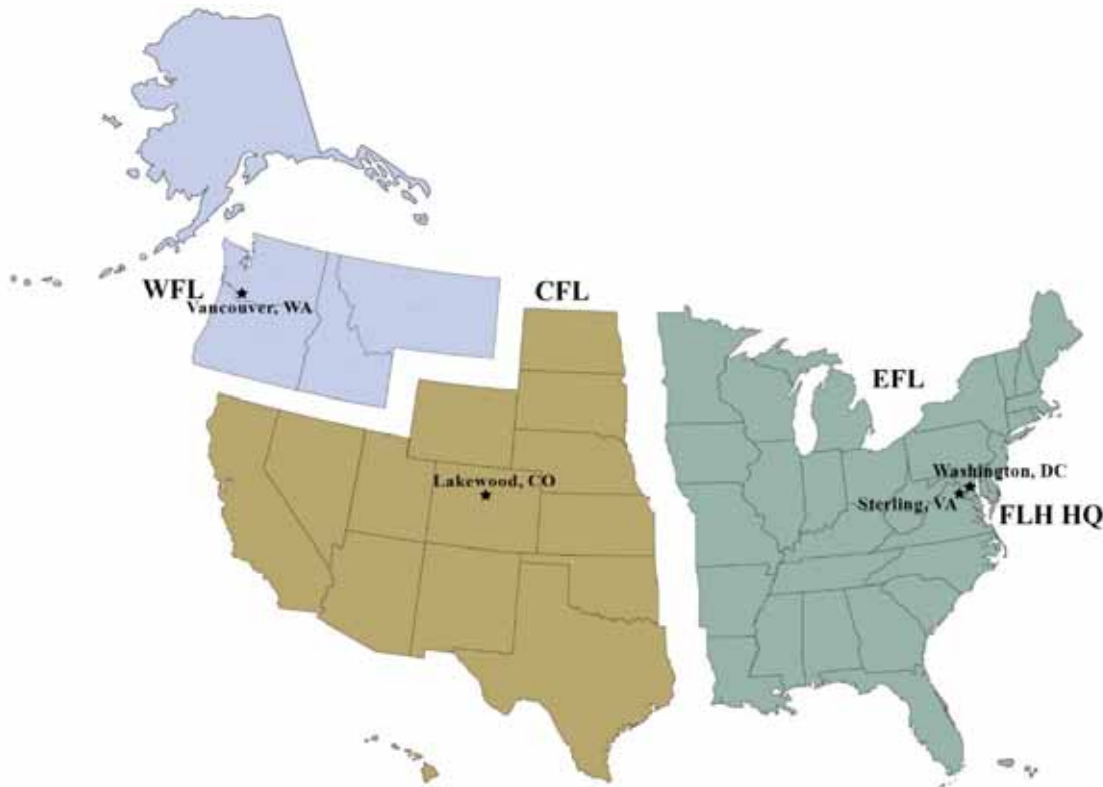
Overview

- Who is Federal Lands Highway (FLH)?
- FLAP Program Background
- Role of Federal Land Management Agencies (FLMAs)
- Potential Project Ideas?

Federal Lands Highway Division



Federal Lands Highway Mission



Improve transportation to and within federal and tribal lands by:

- Building accessible and scenic roads and access to ensure the many national treasures within our federal lands can be enjoyed by all.
- Providing technical services to the highway/transportation community. FLH is at the forefront of delivering distinctive, sensitive, innovative, and sound engineering projects.

FLH Core Programs

FLTP

Federal Lands Transportation Program

Improves transportation facilities owned and maintained by a federal agency – typically within a national park, forest, wildlife refuge, BLM lands, BOR lands, or USACE lands.

→ The Program for Federal Partners

FLAP

Federal Lands Access Program

Improves transportation facilities owned or maintained by a non-federal agency providing access to, adjacent to, or located within federal lands – typically to national park, forest, wildlife refuge, BLM lands, BOR lands, or USACE lands.

→ The Program for Non-Federal Partners for Federal Lands

TTP

Tribal Transportation Program

Provides safe and adequate transportation and public road access to and within Indian reservations, Indian lands, and Alaska Native Village communities.

→ The Program for Tribal Partners for Tribal Lands

ERFO

Emergency Relief of Federally Owned Transportation

The intent of the ERFO program is to pay the unusually heavy expenses for the repair and reconstruction of eligible facilities. The ERFO program is not intended to cover all repair costs, but rather supplement Federal Land Management Agency (FLMA) repair programs.

→ The Emergency Program for Federal Partners



FLAP Program

- Goals
 - Improve transportation facilities that provide access to, adjacent to, or are located within Federal lands.
 - Emphasis on high-use Federal recreation sites and Federal economic generators.
- Changes Resulting from Bipartisan Infrastructure Law (BIL)
 - Modest increase in funding
 - Removal of local match requirement
 - May still be recommended in some projects



Eligible Projects

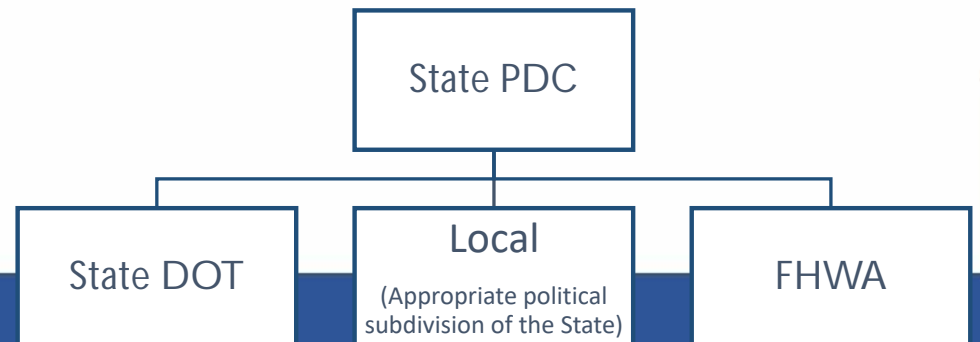
- Capital Improvements: Rehab, restoration, construction of roads, bridges, trails, etc
- Enhancements: Road and trail related improvements such as interpretive signs, adjacent parking areas, etc.
- Surface Preservation
- Transit: Facilities, buses, pilot projects
- Planning: Feasibility studies, corridor studies, bicycle/pedestrian planning
- Research



Little Missouri Bay, ND

Who Makes Programming Decisions?

- Each state has a Programming Decisions Committee (PDC).
- PDC responsibilities include:
 - Develop their own processes and evaluation criteria
 - Establish the next call for projects
 - Review applications
 - Shortlist and select projects



North Dakota Federal Lands Access Program:
Proposed Project FLMA Support Form

Support Form - Acknowledgement of Coordination with Federal Land Management Agency (FLMA)

By signing this support form, the FLMA representative certifies that the projects provide access to, is adjacent to, or are located within a Federal recreation site or Federal economic generator. Please fill in all fields. This form can be signed and submitted electronically or be printed, signed, scanned and submitted electronically. Letters of support are highly recommended in addition to this signature page.

1. Project Title (From Application): _____

2. Applying Agency (From Application): _____

3. Federal Land Management Agency (FLMA) supporting project: _____

4. Name of FLMA representative: _____

5. Title: _____

6. Signature: _____ 7. Date (MMDDYYYY):

8. E-mail: _____ 9. Telephone: _____ ext. _____

10. Comments on the proposed project. (Why is the project significant or critical access for your federal lands?):

11. Please explain how your unit is ready to support the improved, new, and/or increased access. (E.g. if the applicant is building a multimodal path to the entrance, does the unit have existing or proposed infrastructure in place that will support this type of access?)

12. Will Federal Land Transportation Program (FLTP) funds be provided as match for this project? Are there any FLTP projects adjacent to this project?

13. FLMA Point-of-Contact (POC) Name: _____

14. POC Telephone: _____ ext. _____ 15. POC e-mail: _____

Laure Miskimins, Transportation Planner
Central Federal Lands Highway Division
12300 West Dakota Ave. Ste 3606, Lakewood, CO 80228
Phone: 720-963-5455 | laure.miskimins@bld.usgs.gov

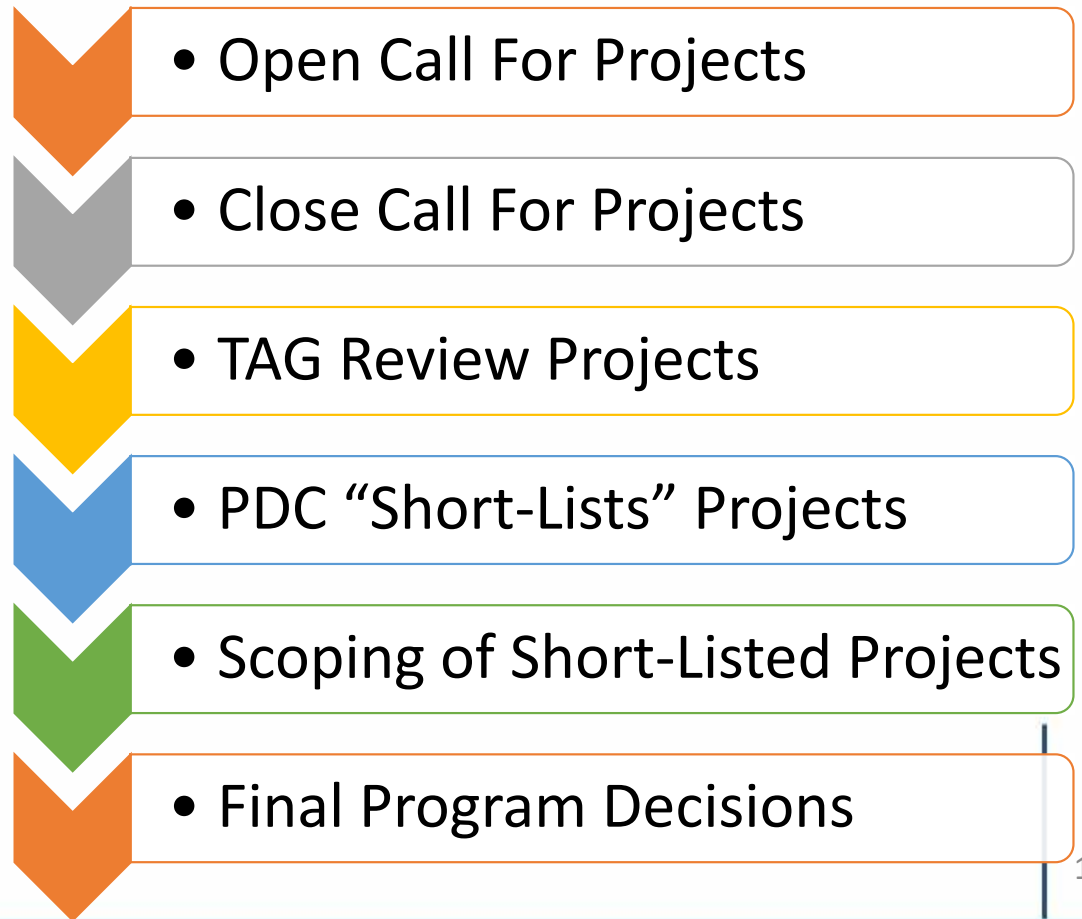
Additional information on the Federal Lands Access Program is located at <http://www.blm.gov/federal-lands/programs-access.html>

What is the Role of the FLMA?

- PDC must “cooperate with each applicable federal agency in each state before any joint discussion or final programming decision.”
- Provide input to PDC during application review
 - Proposed project endorsed as a high priority?
 - Does the proposed project provide access to federal high-use recreation sites or economic generators?
 - Proposed project consistent with FLMA plans?
- Application packet includes an “FLMA Support Form”



Process for Project Selection



Potential Project Ideas?

- Access needs you're aware of?
 - Roads in poor condition
 - Pedestrian/bike path
 - Study to better identify solutions
 - Expanding FLTP-funded project to get more "bang for the buck"



South Fork Smith River, CA

FLAP Information by State

<https://highways.dot.gov/federal-lands/programs-access>

Federal Lands Access Program (FLAP)

The Federal Lands Access Program (Access Program) was established in 23 U.S.C. 204 to improve transportation facilities that provide access to, are adjacent to, or are located within Federal lands. The Access Program supplements State and local resources for public roads, transit systems, and other transportation facilities, with an emphasis on high-use recreation sites and economic generators.

The Program is designed to provide flexibility for a wide range of transportation projects in the 50 States, the District of Columbia, and the Commonwealth of Puerto Rico.

The Access Program is funded by contract authority from the Highway Trust Fund and subject to obligation limitation. Funds will be allocated among the States using a statutory formula based on road mileage, number of bridges, land area, and visitation.

Projects are selected by a Programming Decision Committee (PDC) established in each State. The PDCs request project applications through a call for projects. The frequency of the calls is established by the PDCs. The interactive map below provides the status of the call for projects.

Status of the Call for Projects

To learn more about the call for projects status, points of contact or to access a link to a State FLAP webpage, click on a state in the map below.

** Figures listed are annual allocation estimates per fiscal year and subject to availability of funds.*

Program Guidance

- Access Program Implementation Guidance
- Access Program Fact Sheet
- Fixing America's Surface Transportation (FAST) Act Fact Sheet
- Catalog of Federal Domestic Assistance (CFDA) Number: 20.224

Program Resources

Access Program Funding Amounts by State:

- Distribution Worksheet, FY 2013-2015 (MAP-21 funding levels)
- Distribution Worksheet, FY 2016-2021 (FAST Act funding levels)
- Distribution Worksheet, FY 2022 (IIJA funding levels)

FLAP Accomplishment Reports

- FY 2013 - FY 2015 FLAP Accomplishment Reports
- FY 2018 FLAP Accomplishment Reports

Program Managers